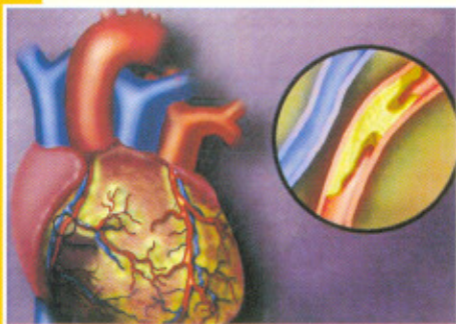


The distinct AIRB

# LOTAN

Losartan Potassium 25/50 mg Tablets



*for*  
meeting the priorities in  
antihypertensive therapy



A Systemic Care Division of DJPL

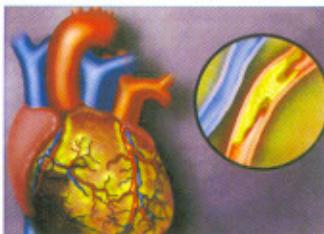
# LOTAN

Losartan Potassium 25/50 mg Tablets

**The Power that offers**  
excellent tolerability without  
compromising efficacy

*Hypertension have been shown to  
be positively and continuously  
related to the risk of:*

- STROKE
- CORONARY HEART DISEASES
- HEART FAILURE
- RECURRENT CARDIOVASCULAR  
EVENTS
- RENAL DISEASES



- Selective, nonpeptide,  
angiotensin- II Type-I receptor  
antagonist
- Reduces cardiovascular events in  
patients with hypertension and left  
ventricular hypertrophy
- Has superior efficacy for reversing  
LVH (Left Ventricular Distrophy)

Circulation. 2004 Sep 14;110(11):1456-62.

Losartan provides protective benefits  
beyond its antihypertensive action.

Curr Med Res Opin. 2004 Nov;20(11):1797-804

**The only angiotensin II receptor  
blockers to demonstrate stroke  
reduction.**

Am. J. Hypertension 1997;10(7pt1):705-13

Losartan is also indicated for the  
**treatment of diabetic nephropathy**  
with an elevated serum creatinine  
and proteinuria, in patients with  
Type-2 diabetes.

Expert Opin Pharmacother. 2004  
Nov;5(11):2311-20



**Feel the difference  
with confidence...**

- Hypertension
- Reliable adjunct with other  
anti-hypertensives

LOTAN provides gradual  
reduction in Blood Pressure  
with an effective 24 hours  
control without affecting the  
body's Circadian rhythm

# LOTAN

**Hope for a life time**

# LOTAN

Losartan Potassium 25/50 mg Tablets  
**Hope for a better life**

## THERAPEUTIC CLASSIFICATION

Antihypertensive

Angiotensin II receptor antagonist

## DESCRIPTION

LOTAN (Losartan) is used in the treatment of hypertension. It is effective when used alone or with diuretics. LOTAN is well absorbed orally and undergoes substantial first pass metabolism with a bioavailability of approximately 33%. About 40% of an orally administered dose is converted to an active carboxylic acid metabolite that is responsible for most of angiotensin II antagonism.

## MECHANISM OF ACTION

Losartan is an angiotensin II receptor (Type AT1) antagonist which acts by blocking the actions of angiotensin II of renin-angiotensin-aldosterone system. The drug and its active metabolite selectively block the vasoconstrictor and aldosterone secreting effects of angiotensin II by selectively antagonizing the binding of angiotensin II to AT1 receptors.

## INDICATIONS

LOTAN (Losartan) is indicated for the treatment of hypertension. LOTAN may be used alone or in combination with other antihypertensive agents.

## DOSAGE AND ADMINISTRATION

**HYPERTENSION:** The usual initial dose of LOTAN 50 is one tablet daily. LOTAN 25 one tablet daily is recommended for patients with hepatic dysfunction or volume depletion. If the antihypertensive response is not satisfactory, an increase in dose or twice daily dose may be given for the desired response. The total daily recommended dose is 25-100mg. No initial dosage adjustment is necessary in the elderly and in patients with mild to moderate renal impairment.

## DOSING

LOTAN may be taken with or without food.

## SIDE/ADVERSE EFFECTS

The more common side effects may include cough, dizziness and upper respiratory tract infections.

## PRECAUTION

The serum potassium concentrations must be monitored, especially in elderly patients or those with renal impairment. A concurrent use of potassium sparing diuretics must be avoided.

## PRESENTATION

LOTAN 25: Each film coated tablets contains: Losartan Potassium 25mg

LOTAN 50: Each film coated tablets contains: Losartan Potassium 50mg

**Packed in:** 30 Tablets x 5 Blisters.



**Deurali-Janta Pharmaceuticals Pvt. Ltd.**

GPO Box 4239, 355 Hattisar Road, Kamalpokhari, Kathmandu, Nepal

Tel: 4435167 email: djpl@wlink.com.np webpage: www.deuralijanta.com

